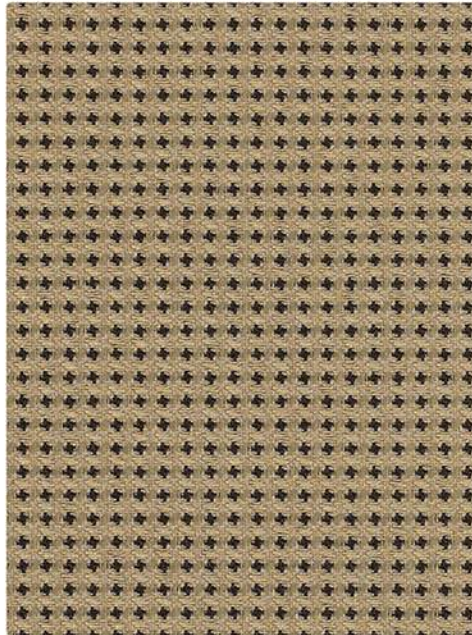


EXPO | GRADE 1



Latte  
09086812



Festive  
09089790



Viola  
09086845



Lemon  
09092620



Zest  
09092631



Raspberry  
09092642



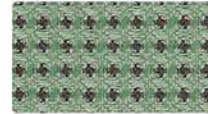
Spirit  
09092675



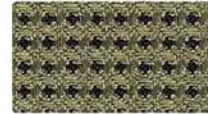
Sky  
09086834



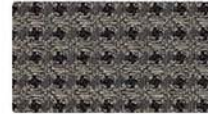
Sprout  
09092653



Oasis  
09092664



Leaf  
09086823



Fog  
09086801



Tuxedo  
09087725

FUSE | GRADE 1



Pepper  
09123387



Lunar  
09123354



Azurean  
09123299



Malted  
09123365



Pristine  
09123409



Cress  
09123321



Iris  
09123343



Walnut  
09123431



Saffron  
09123420



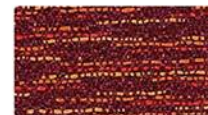
Morel  
09123376



Pimento  
09123398



Ginger  
09123332



Carmine  
09123310

# SPECIFICATIONS

Pattern	Fiber Content & Backing	Finish	Abrasion (D.R.)	Light-fastness	Approx. Repeats	Cleaning Code
54" FUSE	65% Post Industrial Recvclcd	Soil & Stain	100.000	40 Hrs.		WS
EXPO 	65% Post Industrial Recycled Polyester, 35% Post Consumer Recycled Polyester Acrylic Backing	Soil & Stain Resistant	102,000	60 Hrs. Class 4	1/8" L, 1/8" W	WS


\*ACT® Registered Certification Marks

## EXPLANATION OF ACT ICONS FOR UPHOLSTERY


### FIRE RETARDANCY

 Flammability testing determined as fabric's resistance to burning.  
**PASSES**  
California 117


### COLORFASTNESS TO WET & DRY CROCKING

 Colorfastness to wet & dry crocking refers to the rubbing off of color from the fabric onto clothing, hands or other materials and can occur under wet or dry conditions.  
**PASSES**  
AATCC 8-1974 Dry Crocking, Class 4 minimum; Wet Crocking, Class 3 minimum



### COLORFASTNESS TO LIGHT

 Colorfastness to light is the degree to which fabric will retain its color when exposed to light.  
**PASSES**  
AATCC 16A-1974 or AATCC 16E-1976; Class 4 minimum at 40 hours  
NOTE: Class 4 minimum at 60 hours is recommended for direct sunlight exposure situations

### PHYSICAL PROPERTIES

 3 physical property tests include: brush pill test to determine a fabric's pilling. Breaking/tensile strength is the ability of a fabric to withstand tension without breaking or tearing. Seam slippage is the pulling apart of fabrics at the seams.  
**PASSES**  
Brush Pill ASTM D3511, 3-4 minimum  
Breaking Strength ASTM D3597-D1682-64 (1975) 50 lbs. minimum in warp & weft  
Seam Slippage ASTM D3597-D434-75 25 lbs. minimum in warp & weft

### ABRASION

Abrasion is the ability of a fabric to withstand damage from wear and rubbing. There is a general contract specification as well as a heavy duty specification.  
**PASSES**  
 General Contract ASTM 3597 modified (#10 cotton duck); 15,000 double rubs Wyzenbeek Method  
 Heavy Duty ASTM 3597 modified (#10 cotton duck); 30,000 double rubs Wyzenbeek Method or ASTM D4966 (with 21 oz. weight); 40,000 rubs Martindale Method

### CLEANING CODE DEFINITIONS

WS: Clean with water-based cleaning agents, foam or pure, water-free solvents (Energine, Carbona, Renuzit or other similar products). Vacuuming or light brushing is recommended to prevent dust and soil buildup.  
W: Water-based foam, vacuum, brush.



GREENGUARD Children & Schools Indoor Air Quality Certified®. CA Section 01350 compliant. Eligible for CHPS Low-Emitting Material Credits.

For memo samples please contact.

**MOMENTUM**  
TEXTILES

Canada 905-670-5002  
Toll Free 800-366-6839  
memosamples.com

**krug**  
TEXTILES

solutions@krug.ca | www.krug.ca | 1.888.578.5784