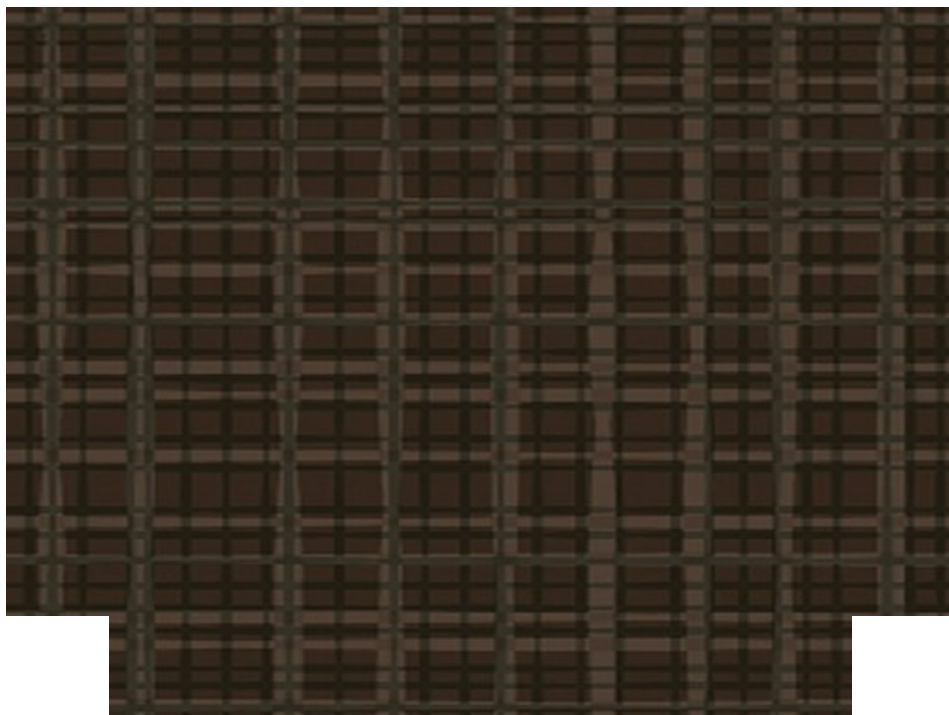


ABBHEY



**Colour / Pattern
Name:**

Brown

Swatch Code:

AB48

Swatches

[Request a Swatch](#)

SPECIFICATIONS & PERFORMANCE

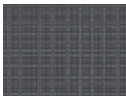
Application Available on all CAT6 Work Spaces Seating and all Rotary Task, Stools, and Side Seating. Availability

may vary by product.

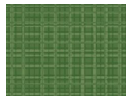
Grade	4
Content	100% Virgin Vinyl, 100% Polyester Loop Knit Backing
Width	54"
Weight	32.25 ± 2 oz/lin yd.
Cleaning	W (Water Based Cleaners) / BC (Bleach Cleanable)
Abrasion	#8 Cotton Duck using Wyzenbeek Method (500,000 Double Rubs)
Flammability	UFAC Class 1 / BIFMA Class A / CAL TB117-2013



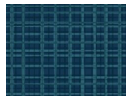
Brown
AB48



Charcoal
AB45



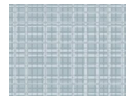
Green
AB44



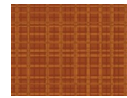
Marlin
AB50



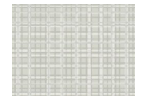
Midnight
AB51



Nobel
AB41



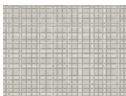
Orange
AB46



Pampas
AB40



Red
AB49



Shadow
AB42



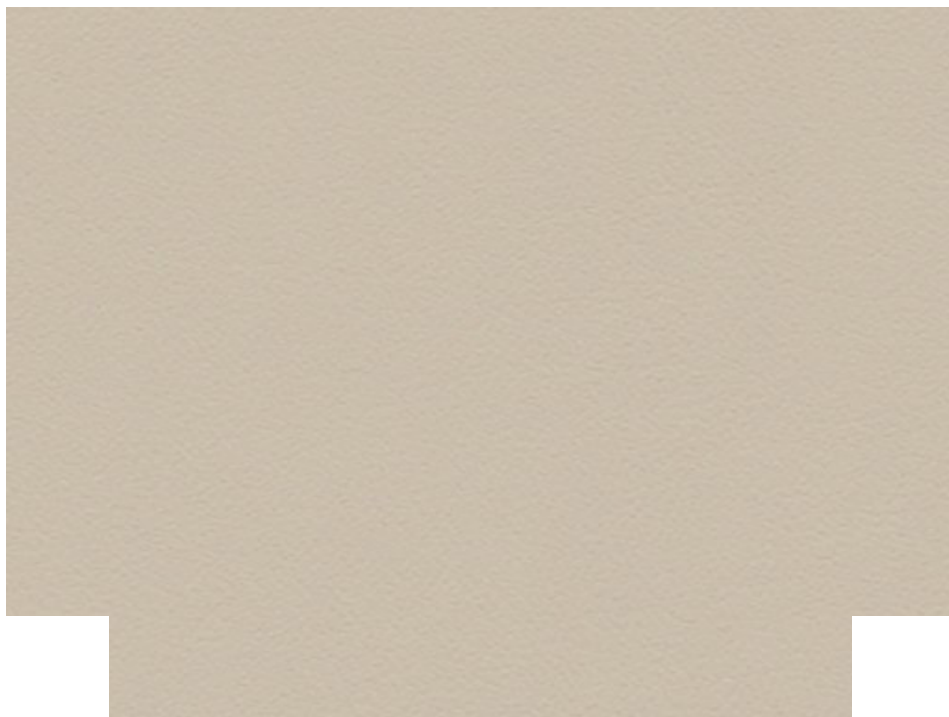
Tropical
AB47



Yellow
AB43

* Due to color variations on different monitors and color printers, if you are concerned about exact color and texture matches, etc. and wish to clarify, we recommend that you first request a sample, to ensure proper color representation. Please contact your local Global Dealer for more information or to order a sample. Global cannot be held responsible for any selections of colors from this website

ALLANTE FREE



Colour / Pattern

Name:

Illusion

Swatch Code:

A01F

Swatches

[Request a Swatch](#)

SPECIFICATIONS & PERFORMANCE

Application Available on CAT6 Seating, Rotary Task, Stools, and Side Seating. Availability may vary by product.

Grade	2
Content	100% Vinyl (Face) / 100% Polyester (Back)
Width	54"
Weight	29.3 ± 2 oz/lin.yd.
Cleaning	W (Water-Based Cleaners) / BC (Bleach Cleanable - 9:1)
Abrasion	#8 Cotton Duck using Wyzenbeek Method (100,000 Double Rubs)
Flammability	NFPA 260 / UFAC Class 1 / CAL TB117-2013



Illusion

A01F



Bright White

A02F



White Crush

A03F



Ivory

A04F



Ice

A05F



Bleached Sand

A06F



Taupe Fawn

A07F



Warm Smoke

A08F



Autumn Rain

A09F



Cookie

A10F



Sierra Brick

A11F



Gibraltar

A12F



Chateau Grey

A13F



Garden Green

A14F



Oasis Green

A15F



Ink Black

A16F



Purple Impulse

A17F



Italian Rose

A18F



Mountain Sky

A19F



Old Navy

A20F



Galaxy

A21F



Red Truffle

A22F



Chocolate Sundae

A23F



Provincial Blue

A24F



Navy

A25F

Eclipse

A25F

* Due to color variations on different monitors and color printers, if you are concerned about exact color and texture matches, etc. and wish to clarify, we recommend that you first request a sample, to ensure proper color representation. Please contact your local Global Dealer for more information or to order a sample. Global cannot be held responsible for any selections of colors from this website

ANCHORAGE



Colour / Pattern

Name:

Birch*

Swatch Code:

AN40

Swatches

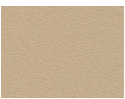
[Request a Swatch](#)

SPECIFICATIONS & PERFORMANCE

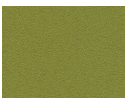
Application Category 1A and Category 6 panels and fabric dividers. Availability may vary by product. *Not

recommended for high
contrast frame colours (i.e.
Black, Charcoal, Designer
White)

Grade	1
Content	65% Pre-Consumer Recycled Polyester, 35% Post-Consumer Recycled Polyester
Width	66"/168 cm
Weight	15.0 +/-1.0 oz./lin. yrd
Cleaning	WS - Water and Solvents
Light Fastness	AATCC-16A Class 5
Flammability	ASTM E-84, California Technical Bulletin 117 (Section E) Class A



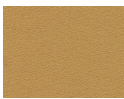
Birch*
AN40



Green
Apple
AN41



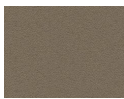
Lapis
AN42



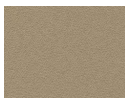
Straw
AN43



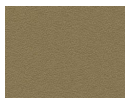
Wolf
AN44



Goose
AN45



Angora
AN46



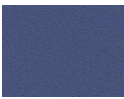
Cumin
AN47



Asteroid
AN48



Geranium
AN49



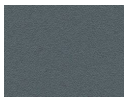
Thistle
AN50



Graphite
AN51



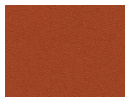
Slate
AN52



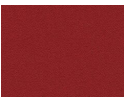
Quarry
Blue
AN53



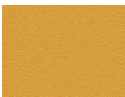
Onyx
AN54



Pumpki
AN55



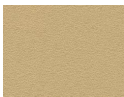
Red



Sunshine*



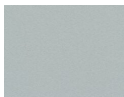
Waterfall



Vanilla



Cobalt



Cloud*

Delicious

AN57

AN59

AN61

AN62

AN64

AN56

* Due to color variations on different monitors and color printers, if you are concerned about exact color and texture matches, etc. and wish to clarify, we recommend that you first request a sample, to ensure proper color representation. Please contact your local Global Dealer for more information or to order a sample. Global cannot be held responsible for any selections of colors from this website

ARISTO



**Colour / Pattern
Name:**

White Water

Swatch Code:

AO20

Swatches

[Request a Swatch](#)

SPECIFICATIONS & PERFORMANCE

Application Available on CAT6 Seating, Rotary Task, Stools, and Side Seating. Availability may vary by product.

Grade	2
Content	100% Virgin Vinyl, 100% Polyester Loop Knit Backing
Width	54"
Weight	32.25 ± 2 oz/lin yd.
Cleaning	W (Water Based Cleaners) / BC (Bleach Cleanable)
Abrasion	#8 Cotton Duck using Wyzenbeek Method (500,000 Double Rubs)
Flammability	CA-TB 117-2013 (Section 1-Cover Fabric), Sect. E UFAC Class 1 NFPA 260
Breaking Strength	Cold Crack: -25° F



White
Water
AO20



Sisal
AO21



Vapor
AO22



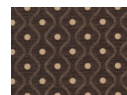
Silhouette
AO23



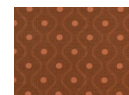
Laurel
AO24



Gold
Mine
AO25



Baked
Pottery
AO26



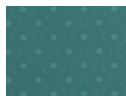
Heat
Wave
AO27



Nirvana
AO28



Sangria
AO29



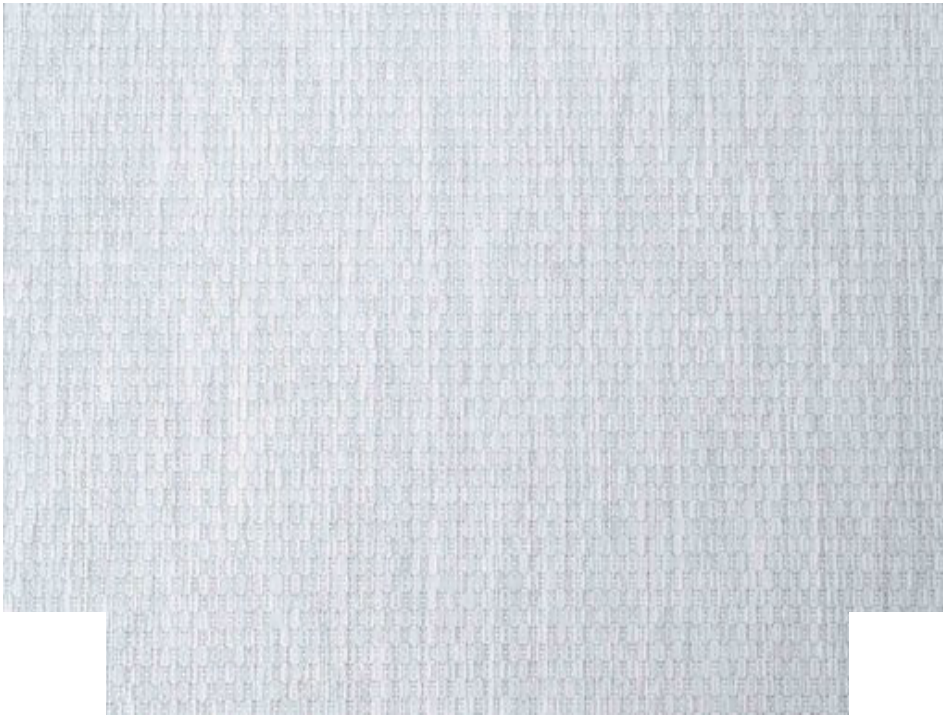
High
Seas
AO30



Tiger
Eye
AO31

* Due to color variations on different monitors and color printers, if you are concerned about exact color and texture matches, etc. and wish to clarify, we recommend that you first request a sample, to ensure proper color representation. Please contact your local Global Dealer for more information or to order a sample. Global cannot be held responsible for any selections of colors from this website

AURORA



Colour / Pattern

Name:

Cloud

Swatch Code:

AU20

Swatches

[Request a Swatch](#)

SPECIFICATIONS & PERFORMANCE

Application Category 1A and Category 6 panels and fabric dividers. Availability may vary by product.

Grade	1
Content	100% Polyester, 80% minimum Post-Consumer Recycled Polyester
Width	66"/168cm
Weight	12.94 oz/lin.yrd
Cleaning	WS - Water and Solvents
Light Fastness	AATCC-16A Class 4.5
Flammability	CAL 117-2013
Crocking	AATCC-8 Class 4
Yarn Breaking	ASTM D5034-95 Warp: 307 lbs, Fill: 210 lbs



Cloud
AU20



Seal
AU21



Fog
AU22



Pewter
AU23



Granite
AU24



Oat
AU25



Coconut
AU26



Latte
AU27



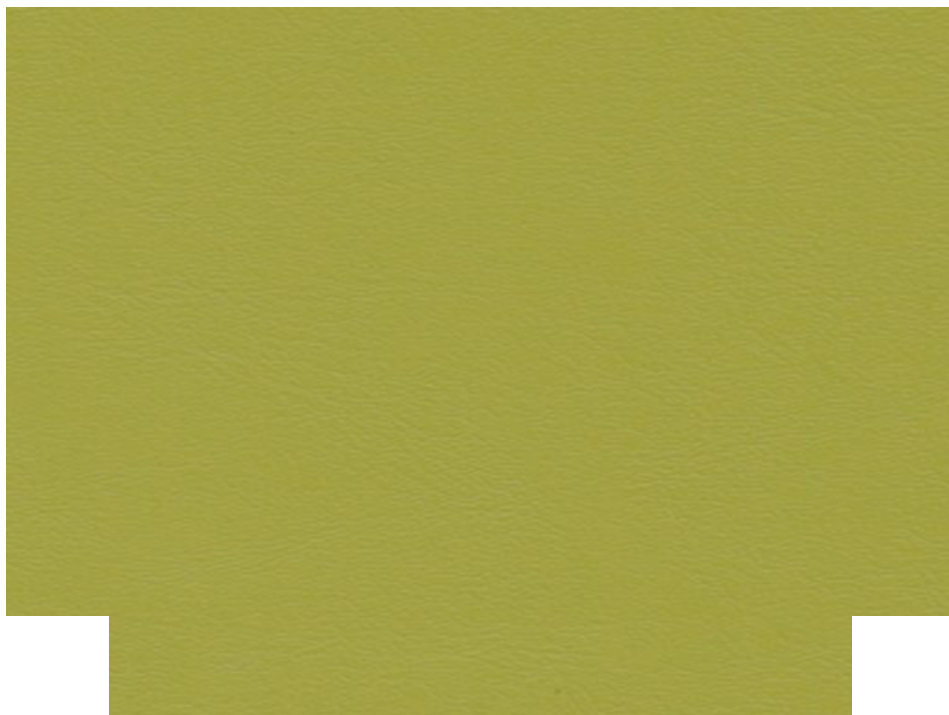
Lake
AU28



Frost
AU29

* Due to color variations on different monitors and color printers, if you are concerned about exact color and texture matches, etc. and wish to clarify, we recommend that you first request a sample, to ensure proper color representation. Please contact your local Global Dealer for more information or to order a sample. Global cannot be held responsible for any selections of colors from this website

BANTAM



Colour / Pattern

Name:

Apple

Swatch Code:

BM21

Swatches

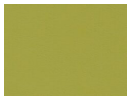
[Request a Swatch](#)

SPECIFICATIONS & PERFORMANCE

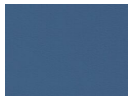
Application Available on all CAT6 Work Spaces Seating and all Rotary Task, Stools, and Side Seating. Availability

may vary by product.

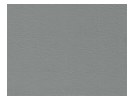
Grade	1
Content	100% Vinyl, 100% Polyester Backing
Width	54"
Weight	35 ± 2 oz/lin.yd.
Cleaning	W (Water-Based Cleaners) / BC (Bleach Cleanable - 9:1)
Abrasion	#10 Cotton Duck using Wyzenbeek Method (100,000 Double Rubs)
Flammability	NFPA 260 / UFAC Class 1 / CAL TB117-2013



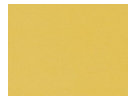
Apple
BM21



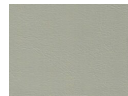
Cosmic
BM25



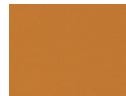
Dove
BM23



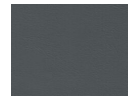
Firelight
BM26



Ghost
BM22



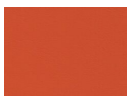
Ginger
BM27



Iron
BM24



Rabbit
BM20



Tropical
BM28

* Due to color variations on different monitors and color printers, if you are concerned about exact color and texture matches, etc. and wish to clarify, we recommend that you first request a sample, to ensure proper color representation. Please contact your local Global Dealer for more information or to order a sample. Global cannot be held responsible for any selections of colors from this website

BEELINE



**Colour / Pattern
Name:**

Cork

Swatch Code:

BN70

Swatches

[Request a Swatch](#)

SPECIFICATIONS & PERFORMANCE

Application Available on CAT6 Seating, Rotary Task, Stools, and Side Seating. Availability may vary by product.

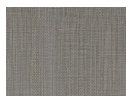
Grade	4
Content	100% Polyurethane
Width	54"
Weight	1.32 lbs/lin.yd.
Cleaning	W (Water-Based Cleaners) / BC (Bleach Cleanable - 4:1)
Abrasion	ASTM D-4157 (Warp: exceeds 900,000 double rubs)
Flammability	NFPA 260 / CAL TB117-2013
Light Fastness	AATCC-16A (Class 4.5)
Breaking Strength	ASTM D-5034 (Warp: 110 lbs; Fill: 110 lbs)



Cork
BN70



Oriole
BN72



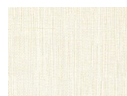
Forge
BN73



Walnut
BN75



Parade
BN76



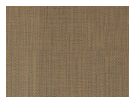
Canvas
BN77



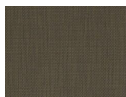
Sprout
BN79



Geyser
BN80



Portobello
BN81



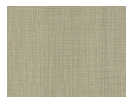
Eclipse
BN82



Sundance
BN83



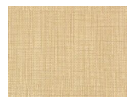
Myth
BN84



Fossil
BN85



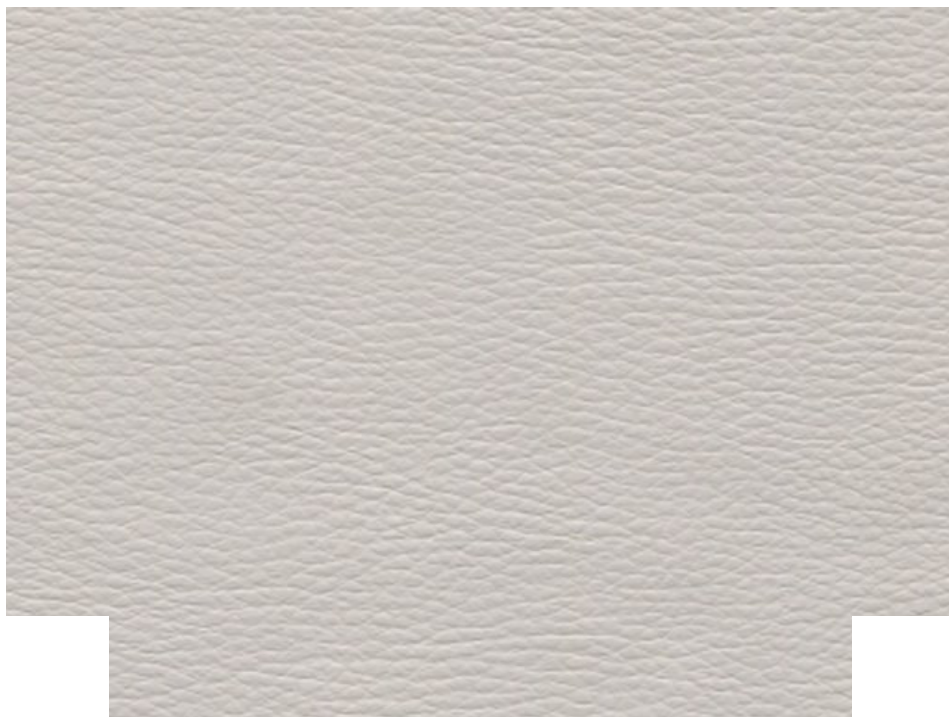
Autumn
BN86



Dune
BN87

* Due to color variations on different monitors and color printers, if you are concerned about exact color and texture matches, etc. and wish to clarify, we recommend that you first request a sample, to ensure proper color representation. Please contact your local Global Dealer for more information or to order a sample. Global cannot be held responsible for any selections of colors from this website

CALIFORNIA



**Colour / Pattern
Name:**

Warm Gray

Swatch Code:

CF36

Swatches

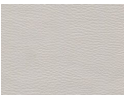
[Request a Swatch](#)

SPECIFICATIONS & PERFORMANCE

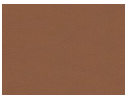
Application Available on all CAT6 Work Spaces Seating and all Rotary Task, Stools, and Side Seating. Availability

may vary by product.

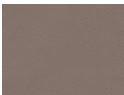
Grade	4
Content	55% TPE (Thermoplastic Elastomer), 35% Polyester, 10% Cotton
Width	54"
Weight	15 oz/lin.yd.
Cleaning	W (Water Based Cleaners) / BC (Bleach Cleanable)
Abrasion	ASTM D-3597 (500,000+ Double Rubs)
Flammability	UFAC Class 1 / ASTM E-84 / CAL TB117-2013 / NFPA 260A
Light Fastness	AATCC-16A (Class 5)
Breaking Strength	ASTM D-5034 (Warp: 140 lbs; Fill: 90 lbs)



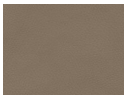
Warm
Gray
CF36



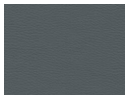
Umber
CF37



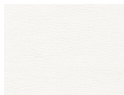
Tiki
CF38



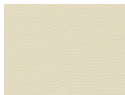
Teak
CF39



Pewter
CF40



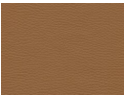
White
CF41



Linen
CF45



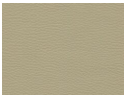
Camel
CF50



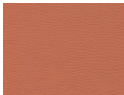
Cinnamon
CF52



Smokewood
CF53



Desert
CF54



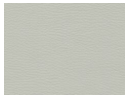
Adobe
CF58



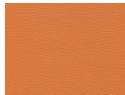
Gray
Mare
CF59



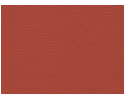
Mushroom
CF60



Misty
Gray
CF61



Mango
CF62



Bolero

CF63

Tucson

CF64

Flagstone

CF65

Silver

Lake

CF66

Sweet

Azalea

CF70

Grapevine

CF75

Bark

CF76

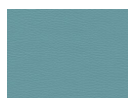
Olive

CF77



Pear

CF78



Bermuda

CF79



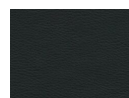
Baja

CF80



Lagoon

CF81



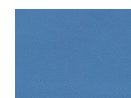
Black

CF83



Calico

CF84



Carolina

CF85



Caymar

CF86



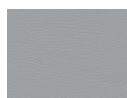
Cobalt

CF87



Cool
Gray

CF88



Dovetail

CF89



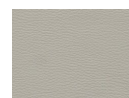
Flamingo

CF90



Hibiscus

CF91



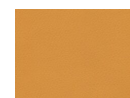
Harbor
Gray

CF92



Peridot

CF93



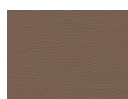
Marigold

CF94



Merlot

CF95



Mocha

CF96



Pine

CF97



Rust

CF98



Sage

CF99

* Due to color variations on different monitors and color printers, if you are concerned about exact color and texture matches, etc. and wish to clarify, we recommend that you first request a sample, to ensure proper color representation. Please contact your local Global Dealer for more information or to order a sample. Global cannot be held responsible for any selections of colors from this website

CELEBRATION



Colour / Pattern

Name:

Cocoa

Swatch Code:

CB86

Swatches

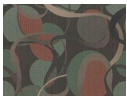
[Request a Swatch](#)

SPECIFICATIONS & PERFORMANCE

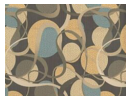
Application Available on all CAT6 Work Spaces Seating and all Rotary Task, Stools, and Side Seating. Availability

may vary by product.

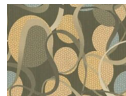
Grade	5
Content	100% Vinyl, 100% Polyester Backing
Width	54"
Weight	32 oz/lin yd.
Cleaning	W (Water-Based Cleaners) / BC (Bleach Cleanable - 9:1)
Abrasion	#8 Cotton Duck using Wyzenbeek Method (500,000 Double Rubs)
Flammability	UFAC Class 1 / BIFMA Class A / CAL TB117-2013



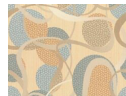
Cocoa
CB86



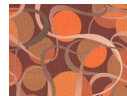
Driftwood
CB80



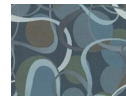
Fiddlehead
CB84



Parchment
CB81



Persimmon
CB83



Slate
Blue
CB85



Steel
Grey
CB82

* Due to color variations on different monitors and color printers, if you are concerned about exact color and texture matches, etc. and wish to clarify, we recommend that you first request a sample, to ensure proper color representation. Please contact your local Global Dealer for more information or to order a sample. Global cannot be held responsible for any selections of colors from this website

COSMOPOLITAN



**Colour / Pattern
Name:**

Ecru

Swatch Code:

CP11

Swatches

[Request a Swatch](#)

SPECIFICATIONS & PERFORMANCE

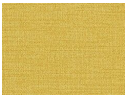
Application Available on all CAT6 Work Spaces Seating and all Rotary Task, Stools, and Side Seating. Availability

may vary by product.

Grade	5
Content	88% Polyester / 12% Nylon
Width	54"
Weight	19.28 oz/lin yd.
Cleaning	C (Crypton Cleaning) / BC (Bleach Cleanable)
Abrasion	Wyzenbeek Method (Warp: exceeds 100,000 double rubs)
Flammability	NFPA 260 / BIFMA Class A / ASTM E-84 / CAL TB117-2013
Light Fastness	AATCC-16A (Class 4)
Piling	ASTM D-3511 (Class 5)
Breaking Strength	ASTM D-5034 (Warp: 220 lbs; Fill: 220 lbs)
Seam Slippage	ASTM D-4034 (Warp: 69.4 lbs; Fill: 78.7 lbs)



E cru
CP11



Marigold
CP12



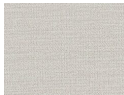
Opal
CP13



Horizon
CP14



Denim
CP15



Mist
CP16



Shiitake
CP17



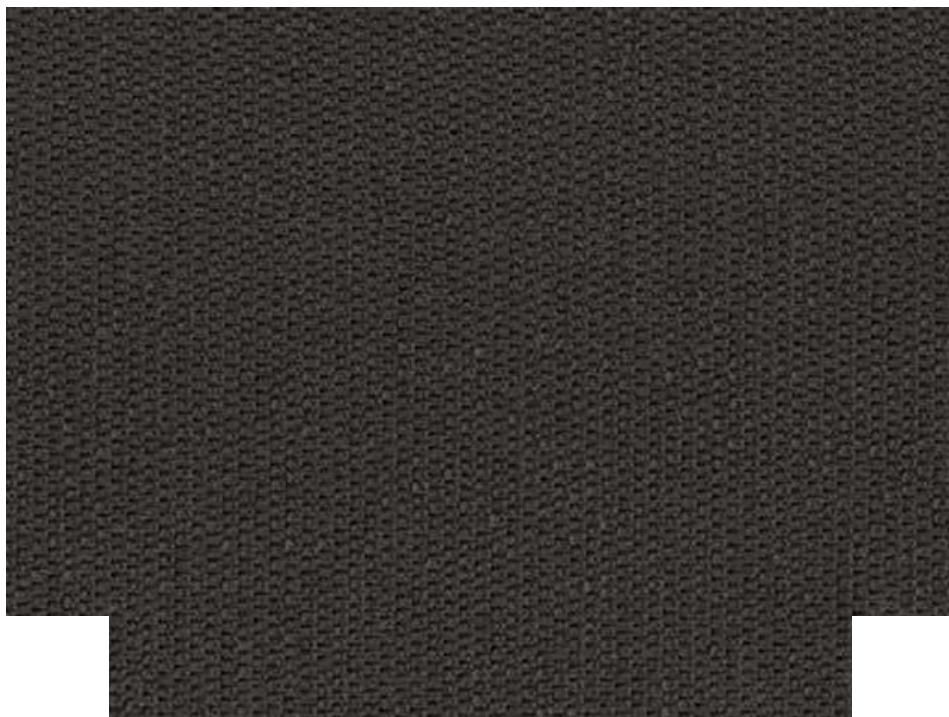
Granite
CP18



Tangerine
CP19

* Due to color variations on different monitors and color printers, if you are concerned about exact color and texture matches, etc. and wish to clarify, we recommend that you first request a sample, to ensure proper color representation. Please contact your local Global Dealer for more information or to order a sample. Global cannot be held responsible for any selections of colors from this website

CYCLONE



**Colour / Pattern
Name:**

Stove Pipe*

Swatch Code:

IM37

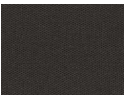
Swatches

[Request a Swatch](#)


SPECIFICATIONS & PERFORMANCE

Application Category 1A and Category 6 panels and fabric dividers. Availability may vary by product. *Not


	recommended for high contrast frame colours (i.e. Black, Charcoal, Designer White)
Grade	2
Content	56% Post-Consumer Recycled Polyester, 44% Virgin Polyester
Width	66"/168cm
Weight	15.5 +/- 0.5 oz./lin. yrd
Cleaning	WS - Water and Solvents
Light Fastness	AATCC-16A Class 5
Flammability	California Technical Bulletin 117 (Section E)
Crocking	AATCC-8 Class 4
Yarn Breaking	ASTM D5034-95 Warp: 190 lbs, Fill: 150 lbs




Stove Pipe*
IM37




Stainless*
IM40




Polished Pewter*
IM41




Welded Steel*
IM43




Etched Bronze*
IM44




Fired Titanium*
IM46



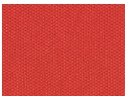
Chrome*
IM49




Dark Annealed
IM50




Karat*
IM54




Red Metal*
IM55




Oxidized Bronze*
IM56



Bright Ray*
IM57



Bismuth Crystal*
IM58



Gallium Blue*
IM59

* Due to color variations on different monitors and color printers, if you are concerned about exact color and texture matches, etc. and wish to clarify, we recommend that you first request a sample, to ensure proper color representation. Please contact your local Global Dealer for more information or to order a sample. Global cannot be held responsible for any selections of colors from this website

DASHING



**Colour / Pattern
Name:**

Classic Silver

Swatch Code:

DS21

Swatches

[Request a Swatch](#)

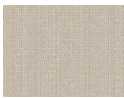
SPECIFICATIONS & PERFORMANCE

Application Category 1A and Category 6
panels and fabric dividers.
Availability may vary by
product.

Grade	2
Content	100% Eco Intelligent Polyester
Width	66"/168cm
Weight	10.9 oz. / lin.yrd
Cleaning	WS - Water and Solvents
Light Fastness	AATCC-16A Class 5
Flammability	CAL 117-2013
Crocking	AATCC-8 Class 5
Yarn Breaking	ASTM D5034-95 Warp: 240.6 lbs, Fill: 191.3 lbs



Classic Silver
DS21



Refined Marble
DS22



Antique Sage
DS23



Polished Slate
DS24



Gentee Beige
DS25



Bespoke Tan
DS26



Dapper Grey
DS27

* Due to color variations on different monitors and color printers, if you are concerned about exact color and texture matches, etc. and wish to clarify, we recommend that you first request a sample, to ensure proper color representation. Please contact your local Global Dealer for more information or to order a sample. Global cannot be held responsible for any selections of colors from this website

FLUENT CRYPTON



**Colour / Pattern
Name:**

Bayou

Swatch Code:

FL46

Swatches

[Request a Swatch](#)

SPECIFICATIONS & PERFORMANCE

Application Available on all Rotary Task, Stools, and Side Seating only. Availability may vary by product.

Grade	8
Content	52% Polyester / 31% Post-Industrial Recycled Polyester / 17% Post-Consumer Recycled Polyester
Width	54"
Weight	23.1 oz/lin.yd.
Cleaning	C (Crypton Cleaning) / BC (Bleach Cleanable)
Abrasion	ASTM D-4157 (Warp: exceeds 100,000 double rubs)
Flammability	NFPA 260 / BIFMA Class A / CAL TB117-2013
Light Fastness	AATCC-16A (Class 4)
Piling	ASTM D-3511 (Class 5)
Breaking Strength	ASTM D-5034 (Warp: 358 lbs; Fill: 225 lbs)
Seam Slippage	ASTM D-4034 (Warp: 112 lbs; Fill: 72 lbs)



Bayou
FL46



Bottle
FL47



Cadet
FL48



Lynx
FL45



Steady
FL49

* Due to color variations on different monitors and color printers, if you are concerned about exact color and texture matches, etc. and wish to clarify, we recommend that you first request a sample, to ensure proper color representation. Please contact your local Global Dealer for more information or to order a sample. Global cannot be held responsible for

any selections of colors from this website

IMPRINT



**Colour / Pattern
Name:**

Almond

Swatch Code:

IM70

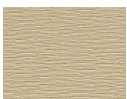
Swatches

[Request a Swatch](#)

SPECIFICATIONS & PERFORMANCE

Application Available on CAT6 Seating, Rotary Task, Stools, and Side Seating. Availability may vary by product.

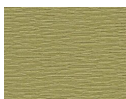
Grade	2
Content	100% Post-Consumer Recycled Polyester / GreenShield Stain Repellent Finish
Width	54"
Weight	15 oz/lin.yd.
Cleaning	WS (Water and Solvents)
Abrasion	ASTM D-4157 (Warp: exceeds 100,000 double rubs; Fill: exceeds 100,000 double rubs)
Flammability	CAL 117 / NFPA 260 / UFAC Class 1 / BIFMA Class A
Light Fastness	AATCC-16A (Class 4)
Piling	ASTM D-3511 (Class 5)
Breaking Strength	ASTM D-5034 (Warp: 326 lbs; Fill: 391 lbs)
Seam Slippage	ASTM D-4034 (Warp: 45 lbs; Fill: 124 lbs)



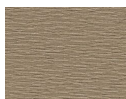
Almond
IM70



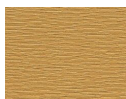
Candy Apple
IM74



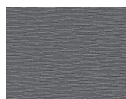
Celery
IM78



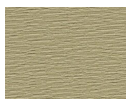
Cork
IM71



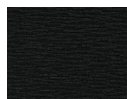
Currie
IM73



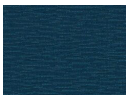
Graphite
IM82



Green Tea
IM77



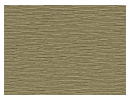
Licorice
IM84



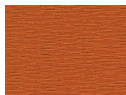
Navy
IM76



Ocean
IM75



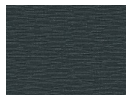
Oregano
IM79



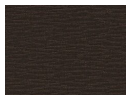
Paprika
IM81



Sand
IM72



Slate
IM83



Walnut
IM80

* Due to color variations on different monitors and color printers, if you are concerned about exact color and texture matches, etc. and wish to clarify, we recommend that you first request a sample, to ensure proper color representation. Please contact your local Global Dealer for more information or to order a sample. Global cannot be held responsible for any selections of colors from this website

LINEA



**Colour / Pattern
Name:**

Cable*

Swatch Code:

LN47

Swatches

[Request a Swatch](#)

SPECIFICATIONS & PERFORMANCE

Application Category 1A and Category 6 panels and fabric dividers. Availability may vary by product. *Not

recommended for high
contrast frame colours (i.e.
Black, Charcoal, Designer
White)

Grade	1
Content	100% Post-Consumer Recycled Polyester
Width	66"/168cm
Weight	11 oz / lin.yd.
Cleaning	WS - Water and Solvents
Light Fastness	AATCC-16A Class 5
Flammability	ASTM E-84, California Technical Bulletin 117 (Section E) Class 1 or A
Crocking	AATCC-8 Class 5
Seam Slippage	ASTM D4034
Yarn Breaking	ASTM D5034-95 Warp: 100 lbs, Fill: 100 lbs



Cable*
LN47



Contour
LN45



Cord*
LN42



Queue
LN41



Route*
LN48



Silhouette
LN46



Thread*
LN44



Twine*
LN43

* Due to color variations on different monitors and color printers, if you are concerned about exact color and texture matches, etc. and wish to clarify, we recommend that you first request a sample, to ensure proper color representation. Please contact your local Global Dealer for more information or to order a sample. Global cannot be held responsible for any selections of colors from this website

LOOPY



**Colour / Pattern
Name:**

Oyster

Swatch Code:

LP60

Swatches

[Request a Swatch](#)

SPECIFICATIONS & PERFORMANCE

Application Category 1A and Category 6 panels and fabric dividers. Availability may vary by product.

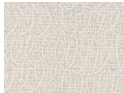
Grade	1
Content	100% Post-Industrial Polyester
Width	66"/168cm
Weight	10.4 +/- 0.3 oz. / lin.yrd
Cleaning	WS - Water and Solvents
Light Fastness	AATCC-16A Class 4
Flammability	ASTM E-84, California Technical Bulletin 117 (Section E) Class 1 or A
Crocking	AATCC-8 Class 3.5
Yarn Breaking	ASTM D5034-95 Warp: 266 lbs, Fill: 203 lbs



Oyster
LP60



Putty
LP61



Marble
LP62



Hazelnut
LP63



Latte
LP64



Bay
LP65



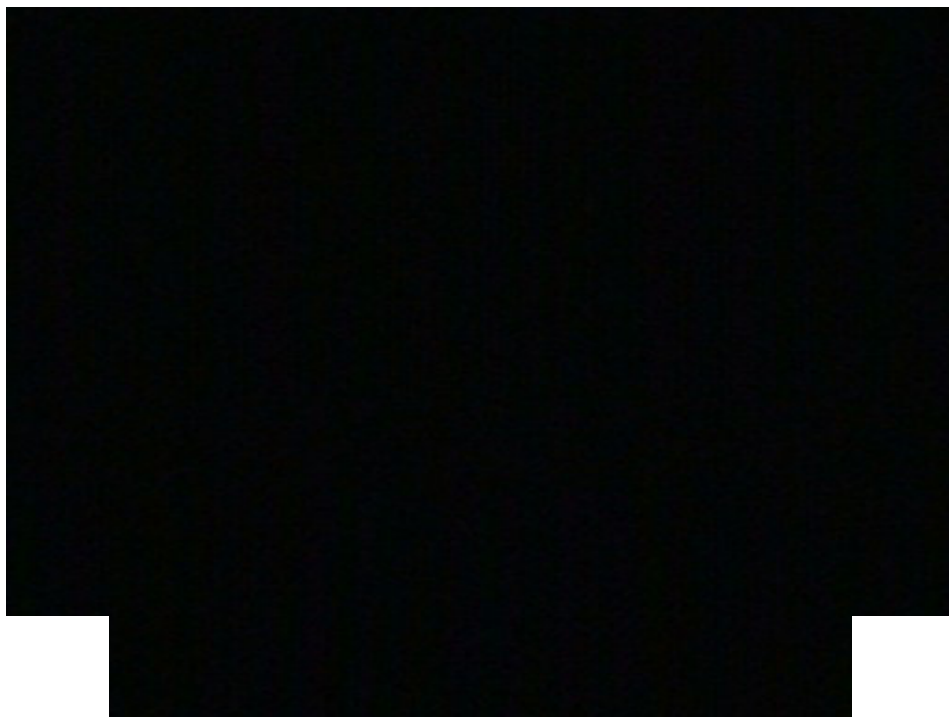
Harbor
LP67



Wild
rice
LP66

* Due to color variations on different monitors and color printers, if you are concerned about exact color and texture matches, etc. and wish to clarify, we recommend that you first request a sample, to ensure proper color representation. Please contact your local Global Dealer for more information or to order a sample. Global cannot be held responsible for any selections of colors from this website

LUXHIDE



Colour / Pattern

Name:

Black

Swatch Code:

BL20

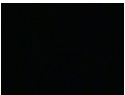
Swatches

[Request a Swatch](#)

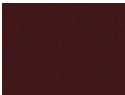
SPECIFICATIONS & PERFORMANCE

Application Available on all CAT6 Work Spaces Seating and all Rotary Task, Stools, and Side Seating. Availability

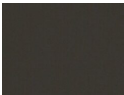
	may vary by product.
Grade	2
Content	100% Bonded Leather
Width	54"
Weight	27.05 ± 2.5 oz/lin.yd.
Cleaning	WS (Water and Solvents)
Abrasion	ASTM D-4157 (Warp: exceeds 200,000 double rubs)
Flammability	CAL 117 / NFPA 260 / UFAC Class 1 / BIFMA Class A
Piling	ASTM G153, 120 hrs (Class 5)



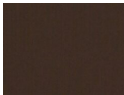
Black
BL20



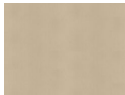
Burgundy
BL26




Charcoal
BL27



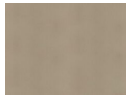
Dark Brown
BL24




Doe
BL29




Espresso
BL44



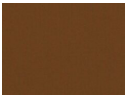
Hopfen
BL31




Hunter Green
BL32



Parchment
BL22



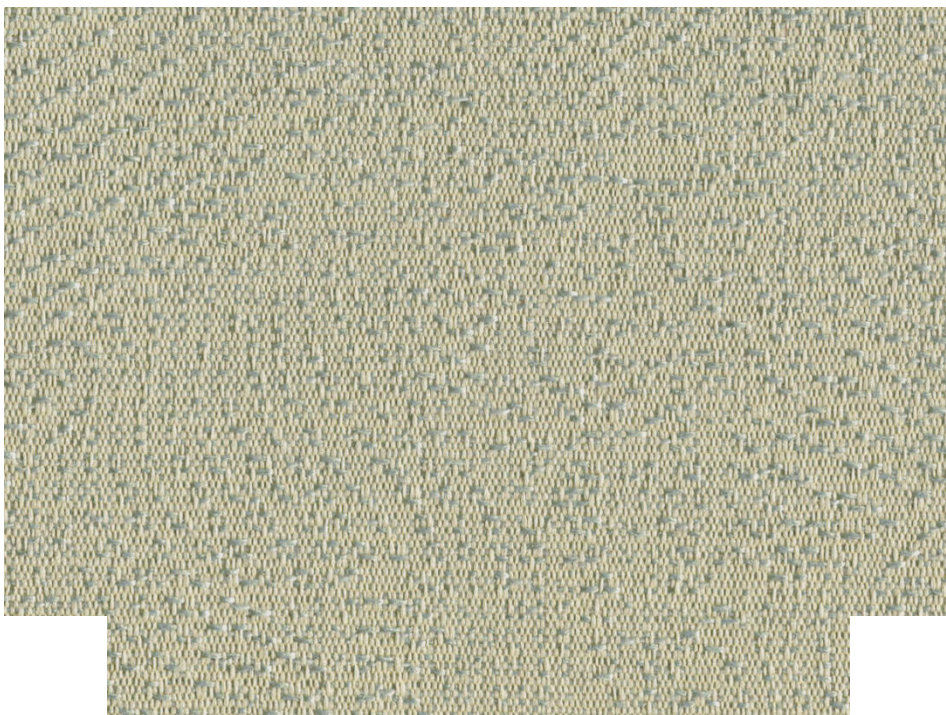
Saddle
BL23



White
BL28

* Due to color variations on different monitors and color printers, if you are concerned about exact color and texture matches, etc. and wish to clarify, we recommend that you first request a sample, to ensure proper color representation. Please contact your local Global Dealer for more information or to order a sample. Global cannot be held responsible for any selections of colors from this website

MELODY



Colour / Pattern

Name:

Spray

Swatch Code:

ME40

Swatches

[Request a Swatch](#)

SPECIFICATIONS & PERFORMANCE

Application Category 1A and Category 6 panels and fabric dividers. Availability may vary by product.

Grade	1
Content	100% Recycled Polyester
Width	66"/168cm
Weight	11.6 +/- 0.5 oz. / lin.yrd
Cleaning	WS - Water and Solvents
Light Fastness	AATCC-16A Class 4
Flammability	ASTM E-84, California Technical Bulletin 117 (Section E) Class 1 or A
Crocking	AATCC-8 Class 4
Yarn Breaking	ASTM D5034-95 Warp: 225 lbs, Fill: 100 lbs



Spray
ME40



Pond
ME41



Sand
Bar
ME42



Silt
ME43



Pebble
ME44



Lake
ME45



Gravel
ME46



Boulder
ME47

* Due to color variations on different monitors and color printers, if you are concerned about exact color and texture matches, etc. and wish to clarify, we recommend that you first request a sample, to ensure proper color representation. Please contact your local Global Dealer for more information or to order a sample. Global cannot be held responsible for any selections of colors from this website

MERGE



Colour / Pattern

Name:

FAWN

Swatch Code:

MG20

Swatches

[Request a Swatch](#)

SPECIFICATIONS & PERFORMANCE

Application Category 1A and Category 6 panels and fabric dividers. Availability may vary by product.

Grade	1
Content	100% Polyester, 75% minimum Post-Consumer Recycled Polyester
Width	66"/168cm
Weight	16.2 oz/lin.yrd
Cleaning	WS - Water and Solvents
Light Fastness	AATCC-16A Class 4.5
Flammability	ASTM E-84, California Technical Bulletin 117 (Section E) Class A
Crocking	AATCC-8 Class 4
Yarn Breaking	ASTM D5034 Warp: 325 lbs, Fill: 275 lbs



FAWN

MG20



MARSHMALLOW

MG21



DIRT

MG22



TWOOD

MG23



DOVE

MG24



GRAPHITE

MG25



SLATE

MG26



EUCALYPTUS

MG27



FIRE ENGINE

MG27



MEDITERRANEAN

MG28

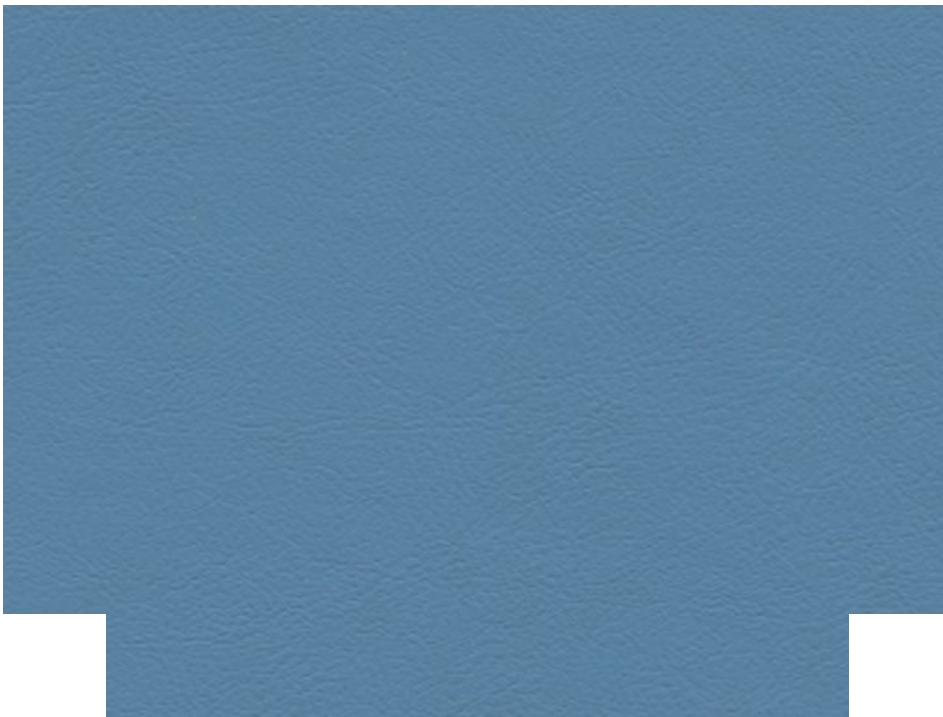


MIDNIGHT

MG29

* Due to color variations on different monitors and color printers, if you are concerned about exact color and texture matches, etc. and wish to clarify, we recommend that you first request a sample, to ensure proper color representation. Please contact your local Global Dealer for more information or to order a sample. Global cannot be held responsible for any selections of colors from this website

MONTANA



**Colour / Pattern
Name:**

Blue Heron

Swatch Code:

MM92

Swatches

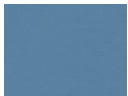
[Request a Swatch](#)

SPECIFICATIONS & PERFORMANCE

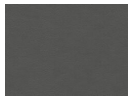
Application Available on all CAT6 Work Spaces Seating and all Rotary Task, Stools, and Side Seating. Availability

may vary by product.

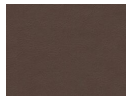
Grade	4
Content	55% TPE (Thermoplastic Elastomer), 35% Polyester, 10% Cotton
Width	54"
Weight	15 oz/lin.yd.
Cleaning	WS (Water and Solvents)
Abrasion	ASTM D-3597 (500,000+ Double Rubs)
Flammability	UFAC Class 1 / ASTM E-84 / CAL TB117-2013 / NFPA 260A
Light Fastness	AATCC-16A (Class 5)
Breaking Strength	ASTM D-5034 (Warp: 157 lbs; Fill: 113 lbs)



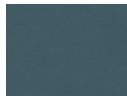
Blue
Heron
MM92



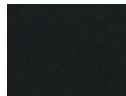
Charcoal
MM84



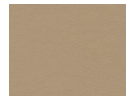
Chocolate
Moose
MM87



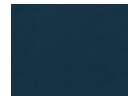
Gray
Slate
MM82



Midnight
MM97



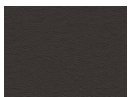
Moccasin
Trail
MM86



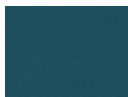
Mountain
Indigo
MM94



Quarry
Rock
MM83



Rocky
Mountain
MM85

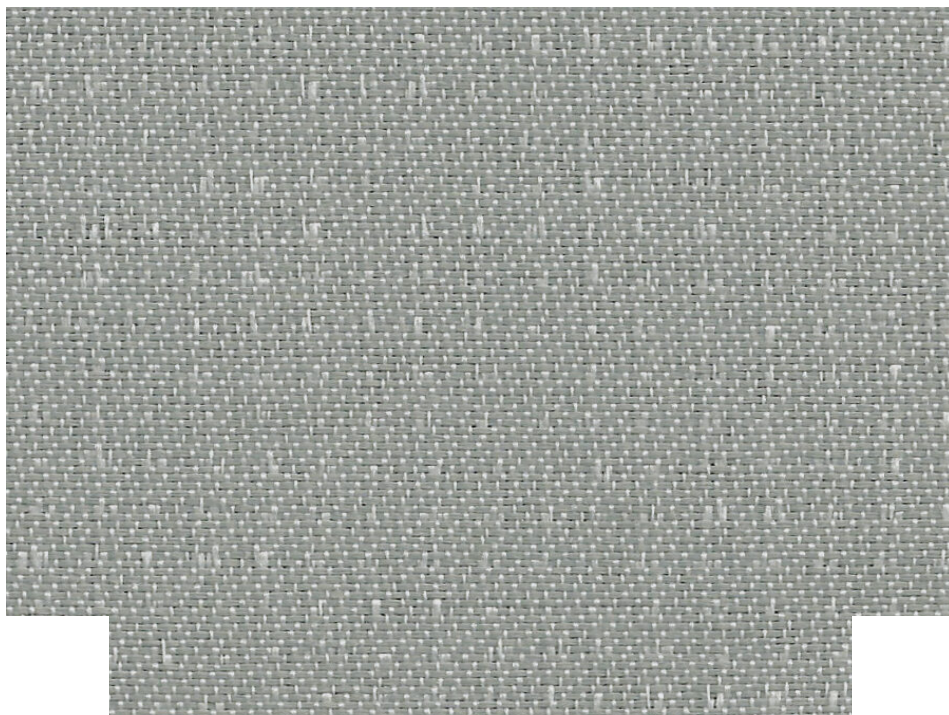


Tribal
Teal
MM96

* Due to color variations on different monitors and color printers, if you are concerned about exact color and texture matches, etc. and wish to clarify, we recommend that you first request a sample, to ensure proper color representation.

Please contact your local Global Dealer for more information or to order a sample. Global cannot be held responsible for any selections of colors from this website

PINPOINT



Colour / Pattern

Name:

Bliss*

Swatch Code:

PN11

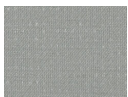
Swatches

[Request a Swatch](#)

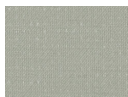
SPECIFICATIONS & PERFORMANCE

Application Category 1A and Category 6 panels and fabric dividers. Availability may vary by product. *Not

	recommended for high contrast frame colours (i.e. Black, Charcoal, Designer White)
Grade	1
Content	100% Post-Consumer Recycled Polyester
Width	66"/168cm
Weight	11 oz / lin.yd.
Cleaning	WS - Water and Solvents
Light Fastness	AATCC-16A Class 5
Flammability	ASTM E-84, California Technical Bulletin 117 (Section E) Class 1 or A
Crocking	AATCC-8 Class 5
Yarn Breaking	ASTM D5034-95 Warp: 100 lbs, Fill: 100 lbs



Bliss*
PN11



Delight*
PN12



Dune*
PN13



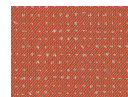
Infusion
PN14



Ebony
PN15



Fresh
PN16



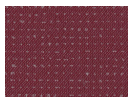
Carrot*
PN17



Splash
PN18



Vibe
PN19



Gala
PN20

* Due to color variations on different monitors and color printers, if you are concerned about exact color and texture matches, etc. and wish to clarify, we recommend that you first request a sample, to ensure proper color representation. Please contact your local Global Dealer for more information or to order a sample. Global cannot be held responsible for

any selections of colors from this website

RELEASE



Colour / Pattern

Name:

Black

Swatch Code:

RL33

Swatches

[Request a Swatch](#)

SPECIFICATIONS & PERFORMANCE

Application

Available on all CAT6 Work Spaces Seating and all Rotary Task, Stools, and Side Seating. Availability

may vary by product.

Grade	2
Content	100% Vinyl
Width	54"
Weight	30±1.5 oz/lin.yd.
Cleaning	W (Water Based Cleaners) / BC (Bleach Cleanable)
Abrasion	ASTM D-4157 (Warp: exceeds 100,000 double rubs) / #8 Duck-Wyzenbeek Method
Flammability	UFAC Class 1 / BIFMA Class A / CAL TB117-2013 / NFPA 260A



Black
RL33



Blue
RL32



Bonsai
RL27



Brave
Red
RL22



Cajun
RL24



Calico
RL29



Chalk
RL12



Cool
Grey
RL34



Cottage
RL18



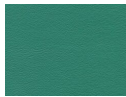
Country
RL16



Dark
Chocolate
RL37



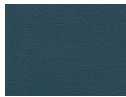
Espresso
RL38



Green
RL31



Gypsy
Red
RL23



Navy
RL36



Olive
RL26



Orange
RL15



Red
Barn
RL21



Stone
RL13



Summer's
Dream
RL28



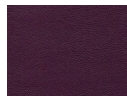
Taupe
RL14



Thunder
Grey
RL35

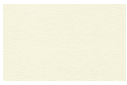


Tuscan
RL17



Vineyard
RL25





White

RL11

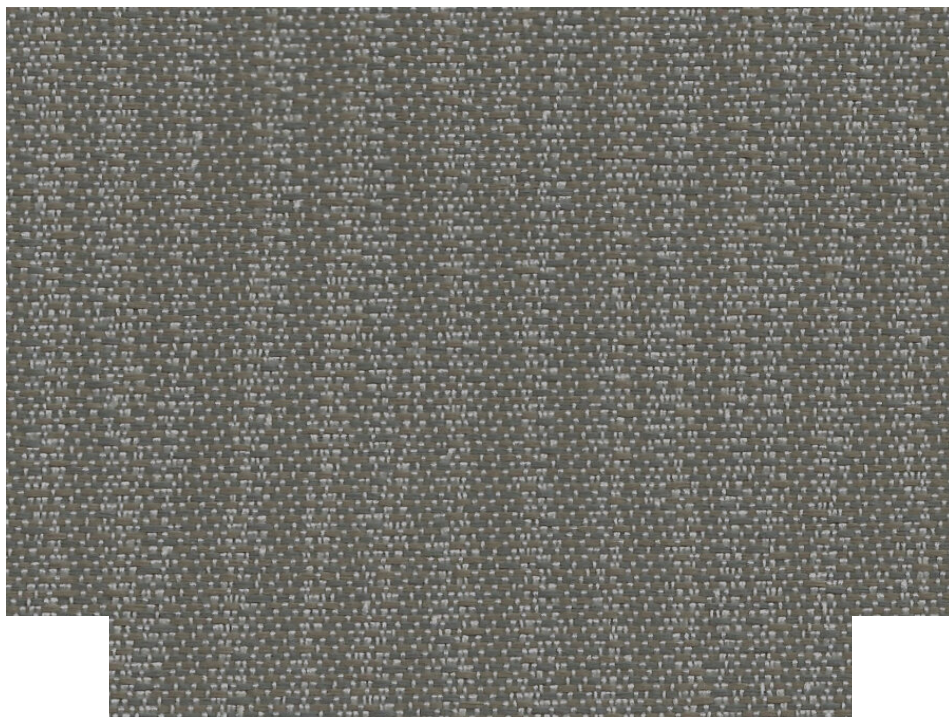


Yellow

RL19

* Due to color variations on different monitors and color printers, if you are concerned about exact color and texture matches, etc. and wish to clarify, we recommend that you first request a sample, to ensure proper color representation. Please contact your local Global Dealer for more information or to order a sample. Global cannot be held responsible for any selections of colors from this website

STREAK



Colour / Pattern

Name:

Beach*

Swatch Code:

SR81

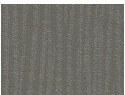
Swatches

[Request a Swatch](#)

SPECIFICATIONS & PERFORMANCE

Application Category 1A and Category 6 panels and fabric dividers. Availability may vary by product. *Not

	recommended for high contrast frame colours (i.e. Black, Charcoal, Designer White)
Grade	1
Content	100% Post-Consumer Recycled Polyester
Width	66"/168cm
Weight	11 oz / lin.yd.
Cleaning	WS - Water and Solvents
Light Fastness	AATCC-16A Class 5
Flammability	ASTM E-84, California Technical Bulletin 117 (Section E) Class 1 or A
Crocking	AATCC-8 Class 5
Yarn Breaking	ASTM D5034-95 Warp: 100 lbs, Fill: 100 lbs



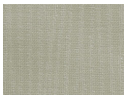
Beach*
SR81



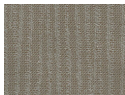
Shade*
SR86



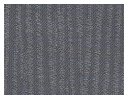
Stretch*
SR88



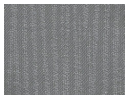
Sprint*
SR89



Roll*
SR91



Dart
SR92



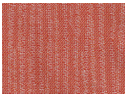
Zoom
SR93



Splash
SR94



Whiz*
SR95

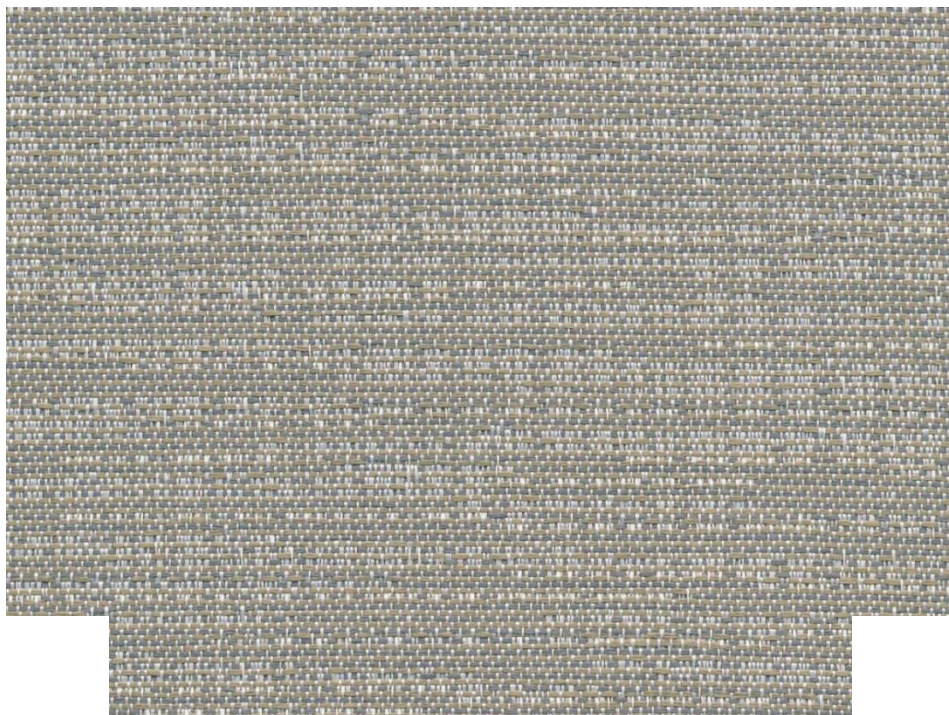


Flash*
SR96

* Due to color variations on different monitors and color printers, if you are concerned about exact color and texture matches, etc. and wish to clarify, we recommend that you first request a sample, to ensure proper color representation. Please contact your local Global Dealer for more information or to order a sample. Global cannot be held responsible for

any selections of colors from this website

TEK

**Colour / Pattern****Name:**

Finesse

Swatch Code:

TX60

Swatches[Request a Swatch](#)

SPECIFICATIONS & PERFORMANCE

Application Category 1A and Category 6 panels and fabric dividers. Availability may vary by product. *Not

recommended for high
contrast frame colours (i.e.
Black, Charcoal, Designer
White)

Grade	1
Content	100% Post-Consumer Recycled Polyester
Width	66"/168cm
Weight	11 oz / lin.yd.
Cleaning	WS - Water and Solvents
Light Fastness	AATCC-16A Class 5
Flammability	ASTM E-84, California Technical Bulletin 117 (Section E) Class 1 or A
Crocking	AATCC-8 Class 5
Seam Slippage	ASTM D4034
Yarn Breaking	ASTM D5034-09 Chaîne : 100 lb; Trame : 100 lb



Finesse
TX60



Grain*
TX61



Essence*
TX62



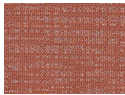
Warp
TX64



Mesh
TX67



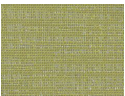
Form
TX69



Spice*
TX71



Glacier
TX72



Spring*
TX73



Harmony*
TX74



Smoke
TX75



Pebble*
TX76

* Due to color variations on different monitors and color printers, if you are concerned about exact color and texture matches, etc. and wish to clarify, we recommend that you first request a sample, to ensure proper color representation. Please contact your local Global Dealer for more information or to order a sample. Global cannot be held responsible for any selections of colors from this website

TRAK



Colour / Pattern

Name:

Taupe

Swatch Code:

TK40

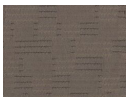
Swatches

[Request a Swatch](#)

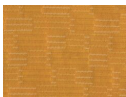
SPECIFICATIONS & PERFORMANCE

Application Available on CAT6 Seating, Rotary Task, Stools, and Side Seating. Availability may vary by product

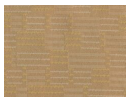
Grade	1
Content	100% Recycled Polyester
Width	54"
Weight	9 oz/lin.yd
Cleaning	WS (Water and Solvents)
Abrasion	ASTM D-4157 (Warp: exceeds 100,000 double rubs; Fill: exceeds 100,000 double rubs)
Flammability	NFPA 260 / BIFMA Class A / CAL TB117-2013
Light Fastness	AATCC-16A (Class 4.5)
Piling	ASTM D-3511 (Class 5)
Breaking Strength	ASTM D-5034 (Warp: 264 lbs; Fill: 96 lbs)
Seam Slippage	ASTM D-4034 (Warp: 61 lbs; Fill: 75 lbs)



Taupe
TK40



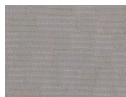
Mustard
TK41



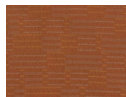
Latte
TK42



Cement
TK43



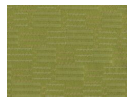
Silver
TK44



Copper
TK45



Teal
TK46



Apple
TK47



Steel
TK48



Merlot
TK49



Midnight
Sky
TK50



Mocha
TK51

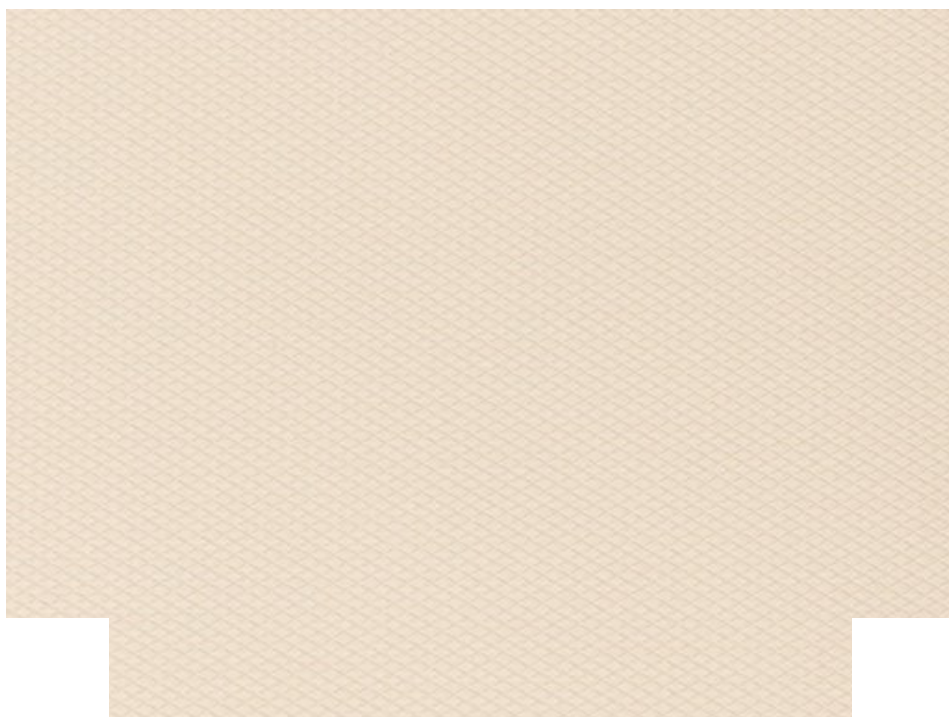


Carbon
TK52

* Due to color variations on different monitors and color printers, if you are concerned about exact color and texture

matches, etc. and wish to clarify, we recommend that you first request a sample, to ensure proper color representation. Please contact your local Global Dealer for more information or to order a sample. Global cannot be held responsible for any selections of colors from this website

VERVE



**Colour / Pattern
Name:**

Café

Swatch Code:

VV41

Swatches

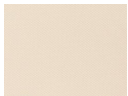
[Request a Swatch](#)

SPECIFICATIONS & PERFORMANCE

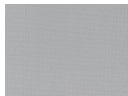
Application Available on all CAT6 Work Spaces Seating and all Rotary Task, Stools, and Side Seating. Availability

may vary by product.

Grade	2
Content	100% Virgin Vinyl, 100% Polyester Loop Knit Backing
Width	54"
Weight	32.25 ± 2 oz/lin yd.
Cleaning	W (Water Based Cleaners) / BC (Bleach Cleanable)
Abrasion	#8 Cotton Duck using Wyzenbeek Method (500,000 Double Rubs)
Flammability	UFAC Class 1 / BIFMA Class A / CAL TB117-2013



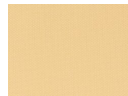
Café
VV41



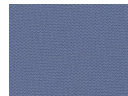
Chrome
VV42



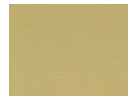
Glacier
VV47



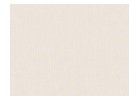
Honey
VV45



Jet Set
VV50



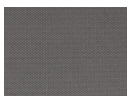
Keylime
VV44



Mist
VV40



Nectar
VV46



Polished Metal
VV43



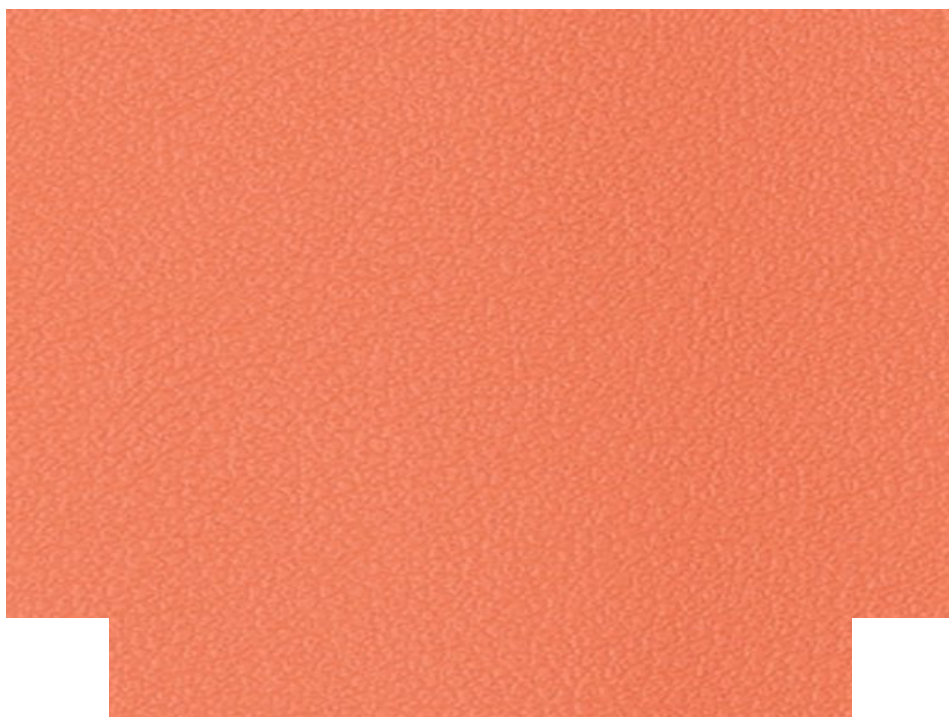
Reflection
VV48



Ruby Slippers
VV49

* Due to color variations on different monitors and color printers, if you are concerned about exact color and texture matches, etc. and wish to clarify, we recommend that you first request a sample, to ensure proper color representation. Please contact your local Global Dealer for more information or to order a sample. Global cannot be held responsible for any selections of colors from this website

VITALITY



**Colour / Pattern
Name:**

Apricot

Swatch Code:

VY33

Swatches

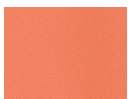
[Request a Swatch](#)

SPECIFICATIONS & PERFORMANCE

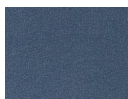
Application Available on all CAT6 Work Spaces Seating and all Rotary Task, Stools, and Side Seating. Availability

may vary by product.

Grade	2
Content	100% Virgin Vinyl, 100% Polyester Loop Knit Backing
Width	54"
Weight	32.25 ± 2 oz/lin yd.
Cleaning	W (Water Based Cleaners) / BC (Bleach Cleanable)
Abrasion	#8 Cotton Duck using Wyzenbeek Method (500,000 Double Rubs)
Flammability	UFAC Class 1 / BIFMA Class A / CAL TB117-2013



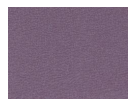
Apricot
VY33



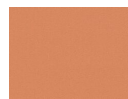
Armada
VY42



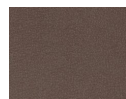
Black
Velvet
VY26



Crushed
Plum
VY41



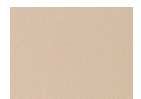
Daybreak
VY31



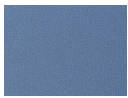
Henna
VY34



Hot
Spring
VY37



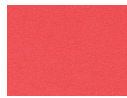
Iced
Coffee
VY24



Old
Glory
VY38



Parrot
VY29



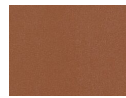
Red
Carpet
VY43



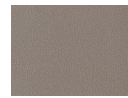
Red
Velvet
VY40



Robyn
Egg
VY39



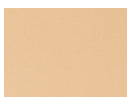
Sienna
VY35



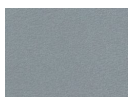
Slate
VY23



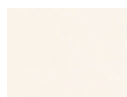
Sterling
VY22



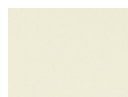
Straw
VY32



Tungsten
VY25



Vanilla
VY21



Willow
VY36

* Due to color variations on different monitors and color printers, if you are concerned about exact color and texture

matches, etc. and wish to clarify, we recommend that you first request a sample, to ensure proper color representation. Please contact your local Global Dealer for more information or to order a sample. Global cannot be held responsible for any selections of colors from this website